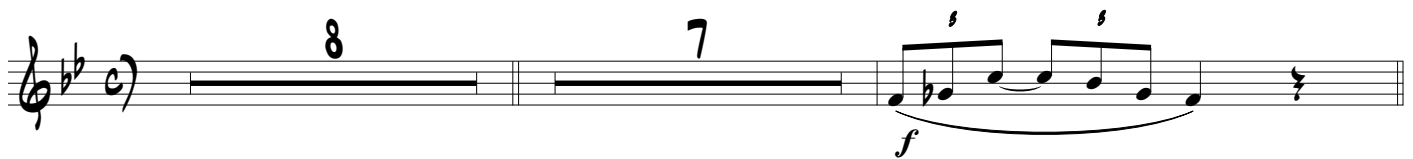


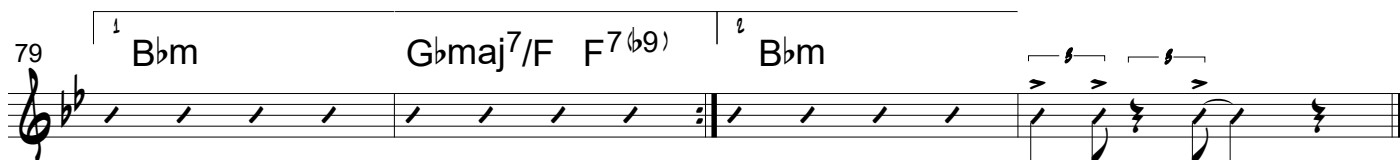
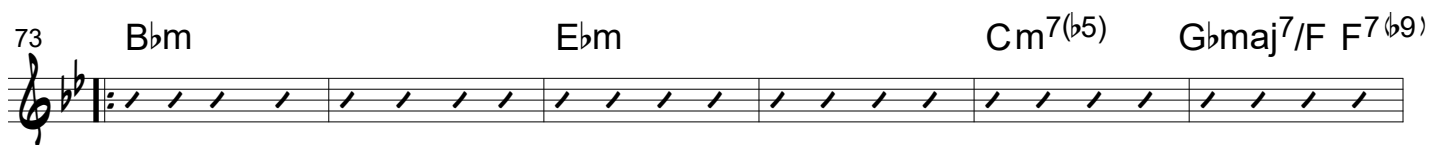
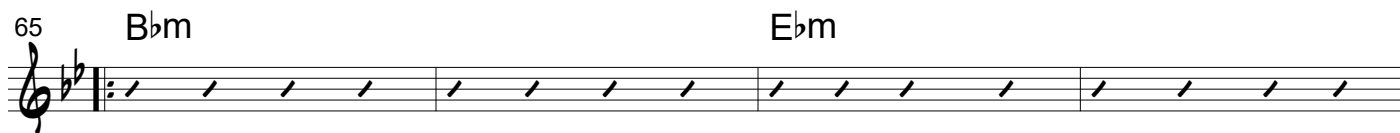
Die Sage vom Erzberg

Gitarre

Introduktion

Johann Hausl





Der Wassermann

Gitarre

Johann Hausl

1 $G\flat\text{maj}7(\sharp 11)/F$ $F7(\flat 9)$
p

5 $B\flat 7$ $E\flat 7$ $B\flat 7$ $E\flat 7$
mf

11 $B\flat 7$ $A\flat 7$ $G 7$ Cm^{11} $F7(\flat 9)$ $B\flat 7$ $F7(\flat 9)$

17 $B\flat 7$ $E\flat 7$ $B\flat 7$ $E\flat 7$

23 $B\flat 7$ $A\flat 7$ $G 7$ Cm^{11} $F7(\flat 9)$ $B 7$ $B\flat 7$

29 $D7(\sharp 11)$ $G7(\sharp 11)$

33 $C7(\sharp 11)$ $G\flat\text{maj}7(\sharp 11)/F$ $F7(\flat 9)$

37 $B\flat 7$ $E\flat 7$ $B\flat 7$ $E\flat 7$
mf

43 $B\flat 7$ $A\flat 7$ $G 7$ Cm^{11} $F7(\flat 9)$ $B 7$ $B\flat 7$

49 $B\flat^7$ $E\flat^7$ $B\flat^7$ $E\flat^7$

mf

55 $B\flat^7$ $A\flat^7$ G^7 Cm^{11} $F^7(\flat 9)$ B^7 $B\flat^7$ $F^7(\flat 9)$

61 $B\flat^7$ $E\flat^7$ $B\flat^7$ $E\flat^7$

67 $B\flat^7$ $A\flat^7$ G^7 Cm^{11} $F^7(\flat 9)$ B^7 $B\flat^7$ 2

73 $D^7(\sharp 11)$ $G^7(\sharp 11)$

f

77 $C^7(\sharp 11)$ $G\flat maj^7(\sharp 11)/F$ $F^7(\flat 9)$

81 $B\flat^7$ $E\flat^7$ $B\flat^7$

mf

85 $E\flat^7$ $B\flat^7$ $A\flat^7$ G^7 Cm^{11}

90 $F^7(\flat 9)$ B^7 $B\flat^7$ $B\flat^7$

f *ff*

Der Tanz des Wassermanns

Gitarre

Johann Hausl



Ein goldener Fuß

Gitarre

Johann Hausl

Chord progression for "Ein goldener Fuß":

Line 1: $G\flat\text{maj}^7/F$ $B\flat^9\text{sus}4$

Line 2 (Measures 5-6): $E\flat$ G^7 Cm $E\flat^7/B\flat$ $A\flat$ $A\flat m^6$

Line 3 (Measures 11-12): $E\flat$ $B\flat^9\text{sus}4$ $E\flat$ G^7 Cm F^9

Line 4 (Measures 17-18): $E\flat/B\flat$ $B\flat^7$ $E\flat$ $A\flat/E\flat$ $E\flat$ Cm^7

Line 5 (Measures 23-24): Fm^7 $B\flat^7$ $E\flat^6$

Line 6 (Measures 29-30): Cm^7 Fm^7 $B\flat^9\text{sus}4$ $B\flat^7$

Line 7 (Measures 35-36): $B\flat^9\text{sus}4$ $B\flat^7$ $E\flat$ G^7 Cm F^9

Line 8 (Measures 41-42): $E\flat/B\flat$ $B\flat^7$ $E\flat$ $A\flat/E\flat$ $E\flat$

Line 9 (Measures 45-46): $E\flat$ G^7 Cm $E\flat^7/B\flat$ $A\flat$ $A\flat m^6$

51 E \flat B \flat ^{9sus4} E \flat G⁷ Cm F⁹

57 E \flat /B \flat B \flat ⁷ E \flat A \flat /E \flat E \flat E \flat

62 Cm⁷ Fm⁷ B \flat ⁷

68 E \flat ⁶ Cm⁷ Fm⁷

74 B \flat ^{9sus4} B \flat ⁷ C^{9sus4} C⁷

78 F A⁷ Dm F⁷/C

82 B \flat B \flat m⁶ F C^{9sus4}

86 F A⁷ Dm G⁹ F/C C⁹

92 F/C C^{9sus4} F B \flat /F F

Ein silbernes Herz

Musik: Johann Hausl

B \flat B \flat /D E \flat F^{9sus4} B \flat Fm⁷ B \flat ⁷ E \flat maj⁷ Edim⁷

mf

7 B \flat /F A \flat ⁷ G⁷ Cm⁷ F^{9sus4} B \flat G⁷ Cm⁷ F⁷

13 B \flat B \flat /D E \flat F^{9sus4} B \flat Fm⁷ B \flat ⁷ E \flat maj⁷ Edim⁷

19 B \flat /F A \flat ⁷ G⁷ Cm⁷ F^{9sus4} Bmaj⁷ B \flat ^{6/9} B \flat /C B/C \sharp

f

25 Am/D D \flat ⁹ D⁹ A \flat ⁹ G^{9sus4} Dm⁹ G⁷

29 Gm/C B⁹ C⁹ G \flat ⁹ F^{9sus4} Cm⁹ F⁷

33 B \flat B \flat /D E \flat F^{9sus4} B \flat Fm⁷ B \flat ⁷ E \flat maj⁷ Edim⁷

39 B \flat /F A \flat ⁷ G⁷ Cm⁷ F^{9sus4} B \flat ^{6/9}

45 B \flat B \flat /D E \flat F^{9sus4} B \flat Fm⁷ B \flat ⁷ E \flat maj⁷ Edim⁷

51 B \flat /F A \flat ⁷ G⁷ Cm⁷ F^{9sus4} Bmaj⁷ B \flat ^{6/9} F^{9sus4} Bmaj⁷ B \flat ^{6/9}

59 Am/D D \flat ⁹ D⁹ A \flat ⁹ G^{9sus4} Dm⁹ G⁷ Gm/C B⁹ C⁹ G \flat ⁹

65 F^{9sus4} Cm⁹ F⁷ B^b B^b/D E^b F^{9sus4} B^b Fm⁷ B^{b7}

71 E^bmaj⁷ Edim⁷ B^b/F A^{b7} G⁷

75 Cm⁷ F^{9sus4} B^b G⁷ Cm⁷ F⁷ B⁷ B^b

79 B^b E⁷ E^{b7} B⁷ B^bmaj⁷ Gm⁷ G^bm⁷ Fm⁹ B^{b7} *f*

83 E^bmaj⁷ Edim⁷ B^b/F A^{b7} G⁷

87 Cm⁷ D^{b7} Cm⁷ G^{b7} F^{9sus4} B^{b6} G^{7(#5)} Cm¹¹ B⁹ B^{b6}

91 B^b B^b/D E^b F^{9sus4} B^b Fm⁷ B^{b7}

95 E^bmaj⁷ Edim⁷ B^b/F A^{b7} G⁷ Cm⁷

100 F^{9sus4} B^{b6/9} B^b E⁷ E^{b7} B⁷

105 B^{b7} A^{b7} G⁷ Cm⁷ D^{b7} Cm⁷ G^{b7} F^{9sus4}

108 Bmaj⁷ B^{b6/9}

Ein eiserner Hut

Gitarre

Johann Hausl



49 Dm⁷ Em^{7(b5)} A⁷ Dm⁷ Am^{7(b5)} D⁷

53 Gm⁷ Em^{7(b5)} A⁷ Dm⁷

57 B^bmaj⁷ A⁷(#9) Dm⁷ Em^{7(b5)}A⁷ B^bmaj⁷

65 Dm Dm^{7(b6)} Dm Dm^{7(b6)} Dm Dm^{7(b6)} Dm Dm^{7(b6)}

73 Dm Dm^{7(b6)} Dm Dm^{7(b6)} Dm Dm^{7(b6)} Dm A⁷(#9)

81 Dm⁷ Em^{7(b5)} A⁷

85 Dm⁷ Em^{7(b5)} A⁷ A⁷(#9) Dm(maj7)

Ein eiserner Hut - Reprise

Gitarre

Johann Hausl

Dm⁷ Em⁷(b5) A⁷ Dm⁷

7 Em⁷(b5) A⁷ A⁷ Dm Dm⁷(b6) Dm Dm⁷(b6)

13 Dm Dm⁷(b6) Dm Dm⁷(b6) Dm Dm⁷(b6)

19 Dm Dm⁷(b6) Dm Dm⁷(b6) Dm Dm⁷(b6)

25 Dm Dm⁷(b6) Dm Dm⁷(b6) Dm Dm⁷(b6)

31 Dm Dm⁷(b6) Dm Dm⁷(b6) Dm Dm⁷(b6)

37 Dm Dm⁷(b6) Dm A⁷(#9) Dm⁷

43 Em⁷(b5) A⁷ Dm⁷ Em⁷(b5) A⁷ A⁷(#9) Dm(maj7)

Ein Karfunkelstein

Gitarre

Johann Hausl

The image displays a musical score for guitar, consisting of a single staff with a treble clef and a key signature of one sharp (F#). The time signature is common time (C). The score is divided into measures, with measure numbers 4, 8, 12, 16, 20, 24, 28, and 32 indicated at the beginning of their respective lines.

The notation includes various musical symbols:

- Measures 1-3:** The first measure contains a whole rest. The second measure begins with a forte (*f*) dynamic and contains a quarter note F#4, followed by eighth notes G4, A4, B4, and C5. The third measure contains eighth notes D5, E5, F#5, and G5, followed by a half note A5 with an accent (^).
- Measures 4-7:** Measure 4 starts with a mezzo-forte (*mf*) dynamic and contains a quarter note F#4, followed by eighth notes G4, A4, and B4. Measures 5, 6, and 7 contain rhythmic slashes, indicating sustained or arpeggiated chords.
- Measures 8-11:** Measure 8 contains a quarter note F#4, followed by eighth notes G4, A4, and B4. Measures 9, 10, and 11 contain rhythmic slashes.
- Measures 12-15:** Measure 12 contains a quarter note F#4, followed by eighth notes G4, A4, and B4. Measures 13, 14, and 15 contain rhythmic slashes.
- Measures 16-19:** Measure 16 contains a quarter note F#4, followed by eighth notes G4, A4, and B4. Measures 17, 18, and 19 contain rhythmic slashes.
- Measures 20-23:** Measure 20 contains a quarter note F#4, followed by eighth notes G4, A4, and B4. Measures 21, 22, and 23 contain rhythmic slashes.
- Measures 24-27:** Measure 24 contains a quarter note F#4, followed by eighth notes G4, A4, and B4. Measures 25, 26, and 27 contain rhythmic slashes.
- Measures 28-31:** Measure 28 contains a quarter note F#4, followed by eighth notes G4, A4, and B4. Measures 29, 30, and 31 contain rhythmic slashes.
- Measures 32-35:** Measure 32 contains a quarter note F#4, followed by eighth notes G4, A4, and B4. Measures 33, 34, and 35 contain rhythmic slashes.

Chord symbols are placed above the staff to indicate the harmonic structure:

- Measures 4-7:** D/G (above measure 4), Gmaj⁷ (above measure 5).
- Measures 8-11:** D/E (above measure 8), Em⁹ (above measure 9).
- Measures 12-15:** D/C (above measure 12), Cmaj⁷ (above measure 13).
- Measures 16-19:** D⁹sus4 (above measure 16), D (above measure 17), D⁹sus4 (above measure 18), G (above measure 19).
- Measures 20-23:** D/G (above measure 20), Gmaj⁷ (above measure 21).
- Measures 24-27:** D/E (above measure 24), Em⁹ (above measure 25).
- Measures 28-31:** D/C (above measure 28), Cmaj⁷ (above measure 29).
- Measures 32-35:** D⁹sus4 (above measure 32), D (above measure 33), D⁹sus4 (above measure 34), G (above measure 35).

36 

40 D/E Em⁹



44 D/C Cmaj⁷

45

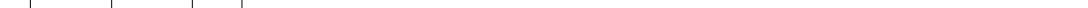
46

48 D⁹sus4 D D⁹sus4 G



Detailed description: This block shows the continuation of the musical score from measure 48 to measure 51. Measure 48 starts with a treble clef and a key signature of one sharp (F#). The chord is D9sus4. Measure 49 has a D chord. Measure 50 has a D9sus4 chord. Measure 51 has a G chord. The notation uses a single staff with a treble clef and a key signature of one sharp. The chords are indicated by letters and superscripts above the staff. The notes are represented by stems and beams, with some notes tied across measures.

52 D/G Gmaj⁷



56 D/E Em⁹

60 D/C Cmaj⁷

60 D/C Cmaj⁷

64 1

D⁹sus4 D D⁹sus4 G

1

68 2
D^{9sus4} D

The musical notation for measures 68-71 is shown on a single staff. Measure 68 begins with a treble clef, a key signature of one sharp (F#), and a common time signature (C). The first two measures (68 and 69) are marked with a '2' above the staff, indicating a second ending. The first measure of the second ending is marked with a 'D^{9sus4}' chord symbol, and the second measure is marked with a 'D' chord symbol. The notation for the second ending consists of a half note G4, a half note A4, and a half note B4. Measure 70 begins with a forte dynamic marking (*f*) and contains a half note G4, a half note A4, and a half note B4. Measure 71 contains a half note G4, a half note A4, and a half note B4, followed by a double bar line.

Conclusion

Gitarre

Johann Hausl

4 8

Gm⁷ Ebmaj⁷ Gm⁷ Ebmaj⁷ Cm⁷ Dm⁷

Ebmaj F^{7sus4} Ebmaj⁷ Dm⁷ Ebmaj⁷ Dm⁷

Ebmaj⁷ Dm⁷ Cm⁷ F^{7sus4} Gm⁷ Ebmaj⁷

Gm⁷ Ebmaj⁷ Cm⁷ Dm⁷ Ebmaj D⁷(#9)

Gm⁷ Ebmaj⁷ Gm⁷ Ebmaj⁷ Cm⁷ Dm⁷

Ebmaj F^{7sus4} Ebmaj⁷ Dm⁷ Ebmaj⁷ Dm⁷

Ebmaj⁷ Dm⁷ Cm⁷ F^{7sus4} Gm⁷ Ebmaj⁷

Gm⁷ Ebmaj⁷ Cm⁷ Dm⁷ Ebmaj D⁷(#9)

Gm⁷ E♭maj⁷ Gm⁷ E♭maj⁷ Cm⁷ Dm⁷

E♭maj F^{7sus4} E♭maj⁷ Dm⁷ E♭maj⁷ Dm⁷

E♭maj⁷ Dm⁷ Cm⁷ F^{7sus4} Cm⁷ F^{7sus4}

B♭maj⁷ Gm⁷ E♭maj⁷

mf *decrescendo* *p*

F^{7sus4} B♭maj⁷ Gm⁷

crescendo *mf* *decrescendo*

E♭maj⁷ F^{7sus4} B♭^{7sus4} E♭maj⁷

p *crescendo* *f*

Cm⁷ A♭maj⁷ B♭^{7sus4} E♭maj⁷

Cm⁷ A♭maj⁷ B♭^{7sus4} E♭maj⁷

D♭maj⁷ Bmaj⁷ Emaj⁷ E♭maj⁷